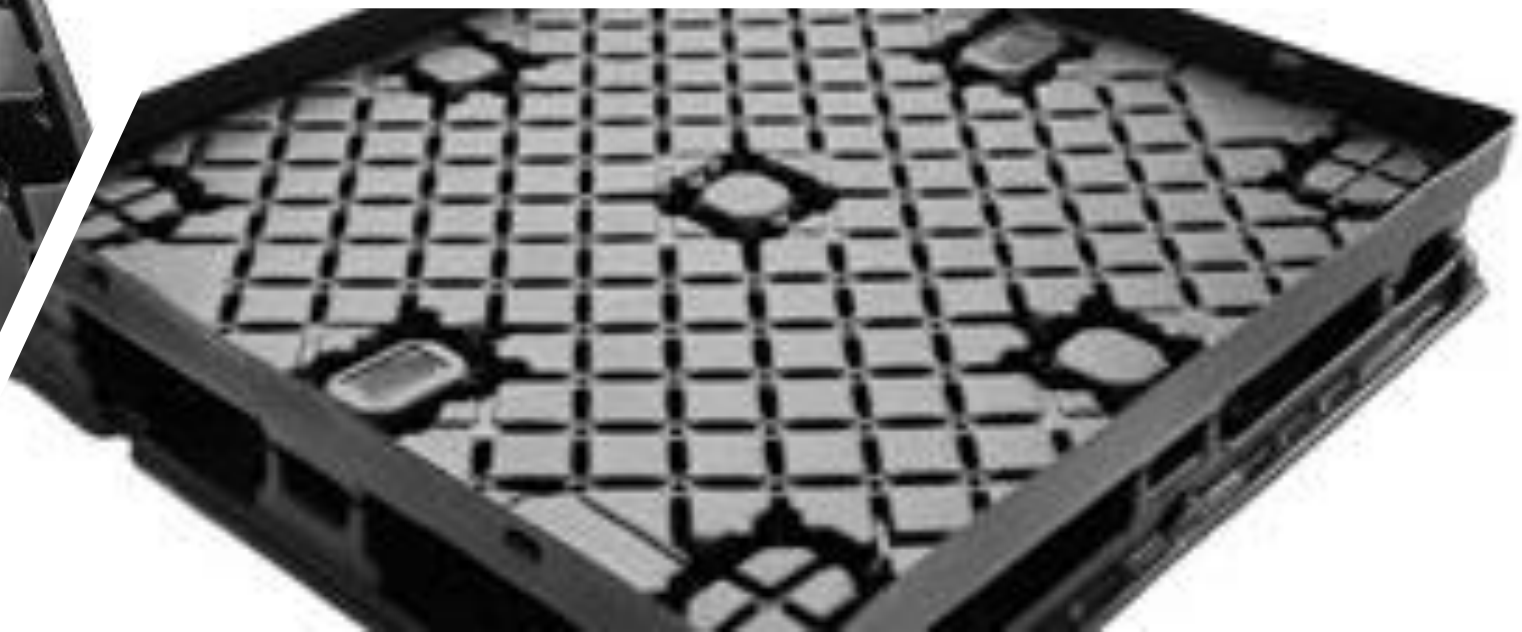
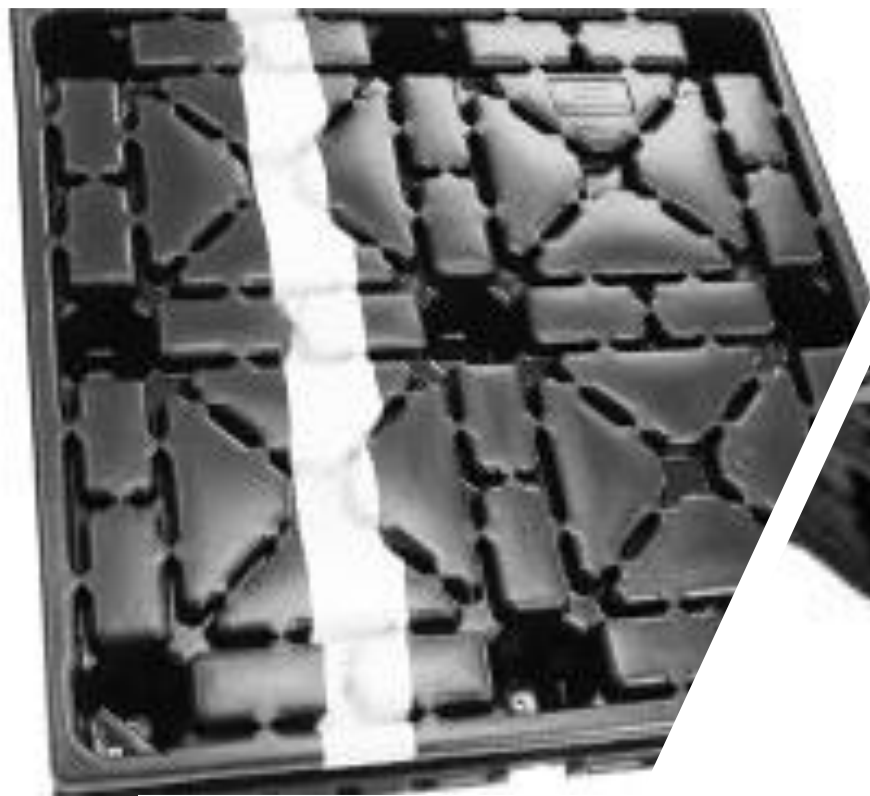


**AIM Reusable  
Packaging**

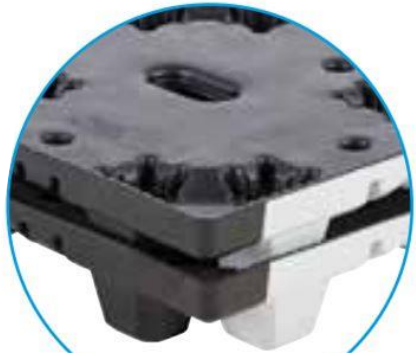
# Vacuum Forming / Thermoforming



# Mirror Image Pallets



Mirror Image  
Design



Nestable Design



2" Webbing/ 59" Min. Length  
Easy Grip Loops

Locations Available  
in Length and/or Width

A Mirror Image Pallet can be used both as a base pallet and a top cap or lid for sleeve / tray packs. When used as a top cap or lid, the legs interlock with the base pallet beneath.



## Sleeve Channel

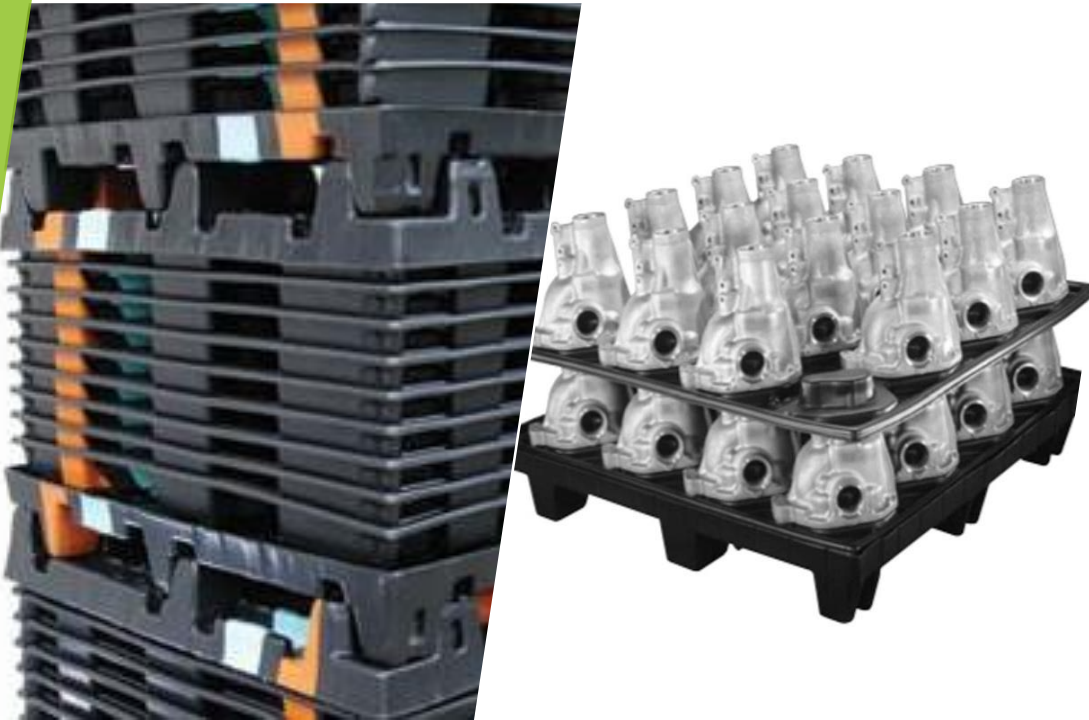


## Sleeve Packs

Odd or inconsistent shaped products require a more innovative approach to space utilization. Primarily made from HDPE (High Density Polyethylene) Sleeve Packs with Vacuum Formed Mirror Image Pallets and or Lids serve as an ideal solution. Sleeve Packs fold down and store conveniently between the base and lid for a stackable, non-bulky solution that can be assembled in no time. Sleeve packs come available in various sizes with optional foldable inserts, manufactured in the color of your choice.

# Dunnage & Tray Packs

Dunnage and trays will be configured to accommodate your unique part or assembly's weight and design to ensure an efficient and reliable pack to be used with assurance that your parts, components, and assemblies are transported safely and without damage.



# Solutions

## FEATURES

- Anti-jam design keeps nested pallets from resting on retractors during return shipments
- Mirror image design
- Conveyable

## OPTIONS

- Cargo belt & buckle
- Stripe identification
- Identification labels (4) locations
- Trays can be designed to interlock with top pallet deck
- Drain holes
- Hand holes

# Advantages

Environmentally  
Friendly

ISPM 15 Exempt

Long Service  
Life

Easy-to-Clean

Sanitary

Impact  
Resistant

4-Way and 2-  
Way Forklift &  
Forkjack Entry

Recyclable